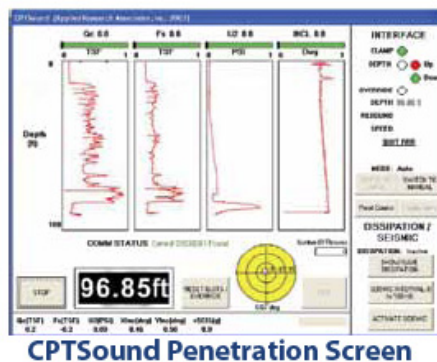


SUMMIT GEOENGINEERING EXPLORATION SERVICES

Summit Geoengineering Services (SGS) is a Maine based consulting firm founded on providing clients with responsive and professional geotechnical and environmental consulting. SGS offers in-house exploration services using an AMS 9500 VTR PowerProbe equipped with Vertek Seismic Cone Penetration Testing (SCPTu) exploration instrumentation. Both AMS and Vertek are industry leaders in manufacturing exploration equipment for geotechnical and environmental explorations. SGS exploration capabilities include:

- Seismic Cone Penetration Testing (SCPTu)
- Conventional Auger Boring with SPT Sampling (Auto-Hammer)
- Direct Push with Soil Liner, Shelby Tube, and SPT Sampling
- PVC Groundwater Monitoring Well Installations

The AMS 9500 VTR PowerProbe is a remote controlled rubber track ATV direct push/auger exploration machine capable of remote site access with low ground pressure and equipped with controlled push for SCPTu penetration testing. The Vertek VTK cone system includes a real-time data logging system with 5 ton and 10 ton SCPTu cones. SCPTu cones are equipped with tri-axial seismic modules to provide both S and P shear wave velocity testing. SCPTu is performed with a single or dual point anchor system pushed at a controlled speed of 2 cm/s with adjustable hydraulics and monitoring instrumentation capable of applying up to 17 tons of push force. This compact yet powerful combination provides high quality geotechnical and environmental explorations for continuous subsurface profiling and data collection.



For more information, please visit us on the web at www.summitgeoeng.com.